

Original Article

**Cite this article:** Mayer SE, Surachman A, Prather AA, Puterman E, Delucchi KL, Irwin MR, Danese A, Almeida DM, Epel ES (2021). The long shadow of childhood trauma for depression in midlife: examining daily psychological stress processes as a persistent risk pathway. *Psychological Medicine* 1–10. <https://doi.org/10.1017/S0033291721000921>

Received: 15 September 2020

Revised: 26 January 2021

Accepted: 26 February 2021

**Key words:**

Childhood trauma; early life adversity; depression; daily stress; daily diaries; stress appraisals; persistent risk pathway

**Author for correspondence:**

Stefanie E. Mayer,

E-mail: [Stefanie.Mayer@ucsf.edu](mailto:Stefanie.Mayer@ucsf.edu)

# The long shadow of childhood trauma for depression in midlife: examining daily psychological stress processes as a persistent risk pathway

Stefanie E. Mayer<sup>1</sup>, Agus Surachman<sup>2,3</sup>, Aric A. Prather<sup>1</sup>, Eli Puterman<sup>4</sup>, Kevin L. Delucchi<sup>1</sup>, Michael R. Irwin<sup>5</sup>, Andrea Danese<sup>6,7</sup>, David M. Almeida<sup>2,3</sup> and Elissa S. Epel<sup>1</sup>

<sup>1</sup>Department of Psychiatry and Behavioral Sciences, University of California, San Francisco, CA, USA; <sup>2</sup>Department of Human Development and Family Studies, The Pennsylvania State University, University Park, PA, USA; <sup>3</sup>Center for Healthy Aging, The Pennsylvania State University, University Park, PA, USA; <sup>4</sup>School of Kinesiology, University of British Columbia, Vancouver, BC, Canada; <sup>5</sup>Cousins Center for Psychoneuroimmunology, UCLA Semel Institute for Neuroscience and Human Behavior, Los Angeles, CA, USA; <sup>6</sup>Social, Genetic and Developmental Psychiatry Centre and Department of Child and Adolescent Psychiatry, Institute of Psychiatry, Psychology and Neuroscience, King's College London, London, UK and <sup>7</sup>National and Specialist CAMHS Clinic for Trauma, Anxiety, and Depression, South London and Maudsley NHS Foundation Trust, London, UK

## Abstract

**Background.** Childhood trauma (CT) increases the risk of adult depression. Buffering effects require an understanding of the underlying persistent risk pathways. This study examined whether daily psychological stress processes – how an individual interprets and affectively responds to minor everyday events – mediate the effect of CT on adult depressive symptoms. **Methods.** Middle-aged women ( $N = 183$ ) reported CT at baseline and completed daily diaries of threat appraisals and negative evening affect for 7 days at baseline, 9, and 18 months. Depressive symptoms were measured across the 1.5-year period. Mediation was examined using multilevel structural equation modeling. **Results.** Reported CT predicted greater depressive symptoms over the 1.5-year time period (estimate = 0.27, s.e. = 0.07, 95% CI 0.15–0.38,  $p < 0.001$ ). Daily threat appraisals and negative affect mediated the effect of reported CT on depressive symptoms (estimate = 0.34, s.e. = 0.08, 95% CI 0.22–0.46,  $p < 0.001$ ). Daily threat appraisals explained more than half of this effect (estimate = 0.19, s.e. = 0.07, 95% CI 0.08–0.30,  $p = 0.004$ ). Post hoc analyses in individuals who reported at least moderate severity of CT showed that lower threat appraisals buffered depressive symptoms. A similar pattern was found in individuals who reported no/low severity of CT. **Conclusions.** A reported history of CT acts as a latent vulnerability, exaggerating threat appraisals of everyday events, which trigger greater negative evening affect – processes that have important mental health consequences and may provide malleable intervention targets.

## Introduction

Traumatic childhood experiences (physical, sexual, emotional abuse, and neglect) can leave ‘scars’ on adult life – increasing risk for mental health disorders, including depression (Green et al., 2010; Kendler et al., 2000; Kessler, Davis, & Kendler, 1997). Buffering these effects requires an understanding of the underlying risk pathways. Daily cognitive-affective stress processes have been proposed as one pathway linking childhood trauma (CT) to adult health (Epel et al., 2018; Miller, Chen, & Parker, 2011). However, this has not been directly tested. Deepening our understanding of the daily psychological mechanisms can inform non-pharmacological interventions.

Individuals’ psychological responses to daily stressors can impact health (Charles, Piazza, Mogle, Sliwinski, & Almeida, 2013; Epel et al., 2018; Lazarus, 1999). The perceived negative impact of the stressor, termed cognitive threat appraisal (Lazarus, 1999), determines whether the event is interpreted as a threat or challenge (Blascovich & Mendes, 2010). Threat appraisals also mold affective stress responses (Blascovich & Mendes, 2010; Lazarus, 1999). CT shapes individuals’ habitual ways of appraising and affectively responding to everyday stressors, as shown in daily diary studies (Glaser, van Os, Portegijs, & Myin-Germeys, 2006; Infurna, Rivers, Reich, & Zautra, 2015; Kong, Martire, Liu, & Almeida, 2019; Lardinoio, Lataster, Mengelers, Van Os, & Myin-Germeys, 2011; Mellers, Charles, Neupert, & Almeida, 2010; Weltz, Armeli, Ford, & Tennen, 2016). For example, more frequent experiences of reported childhood abuse are associated with greater threat appraisals and negative affect in response

© The Author(s) 2021. Published by Cambridge University Press. This is an Open Access article, distributed under the terms of the Creative Commons Attribution licence (<http://creativecommons.org/licenses/by/4.0>), which permits unrestricted re-use, distribution and reproduction, provided the original article is properly cited.

to daily adult stressors (Kong *et al.*, 2019). Daily stress processes, in return, shape the extent to which daily events have the potential to impact mental and physical health. For example, threat appraisals in response to laboratory stress are associated with shorter TL (O'Donovan *et al.*, 2012) and greater inflammation (Slavich & Irwin, 2014). Similarly, negative affect in the evening after a minor daily event predicts risk for depression (Charles *et al.*, 2013; Cohen, Gunthert, Butler, O'Neill, & Tolpin, 2005), chronic physical health problems (Piazza, Charles, Sliwinski, Mogle, & Almeida, 2013), and systemic inflammation (Sin, Graham-Engeland, Ong, & Almeida, 2015) years later.

Overall, daily cognitive-affective stress processes appear to be a highly plausible psychological pathway linking CT to increased depression risk. This study directly tested the mediational pathway in a sample of healthy women who completed daily stress diaries along with self-report measures of CT and depressive symptoms. We hypothesized that reported CT will predict higher depressive symptoms, which will be mediated by more maladaptive daily stress processes (greater threat appraisals and greater negative affect).

## Methods

### Participants

Participants were 183 mothers from a longitudinal study that examined the impact of chronic caregiver stress on biological markers of stress, cellular aging, and wellbeing. Participants were recruited via social media and local community advertisements (e.g. schools, parenting publications, child development centers in the San Francisco Bay Area). Eligible participants were 20–50 years old, premenopausal, non-smoking, with no major physical diseases (including no history of coronary heart disease, endocrine disorders, epilepsy, brain injury, autoimmune conditions, severe asthma or lung disease), and had at least one child between the ages of 2 and 16 years. Maternal caregivers ( $n = 92$ ) had to care for a child diagnosed with autism spectrum disorder and report a score of  $\geq 13$  on the Perceived Stress Scale (PSS; Cohen, 1988; Cohen, Kamarck, & Mermelstein, 1983). Maternal controls ( $n = 91$ ) had to care for a neurotypical child and report a score of  $\leq 19$  on the PSS. The PSS criteria allowed for analyses across the continuum of perceived chronic stress, independent of caregiver group status. Participants were excluded if they had a current psychiatric condition as determined by questions from the Structured Clinical Interview for Diagnostic and Statistical Manual for Mental Disorders for Axis I Disorders (SCID), including bipolar disorder, posttraumatic stress disorder and eating disorders, and, for maternal controls, current major depression. Current major depression and antidepressant use were permitted among caregivers because depression is a common response to chronic stress. We chose this sample to examine links between CT, daily stress processes, and depressive symptoms because the study recruited participants across the stress and depression spectrum, with one-third of the sample reporting at least moderately severe CT. Another strength of the study was that rich daily diary data were collected over a period of 1.5 years, allowing us to capture habitual responses to everyday stressors across different life circumstances.

### Overview of procedures

During a laboratory baseline assessment, participants provided informed consent and self-report measures. They also completed 7 days of daily diaries. Procedures were repeated at 9, 18, and

24 months. Forty-three percent of participants completed a mindfulness intervention between 18 and 24 months, limiting current analyses to the initial 1.5 years. The study was approved by the local Institutional Review Board.

### Self-report measures

#### Sociodemographic information

Age, race, marital status, education, annual household income, and caregiver group status (0 = maternal controls; 1 = maternal caregivers) were assessed at baseline.

#### Childhood trauma

CT was assessed via retrospective self-report at baseline with the Childhood Trauma Questionnaire (CTQ;  $\alpha = 0.84$ ; Bernstein & Fink, 1998). CTQ subscales were calculated for emotional abuse ( $\alpha = 0.85$ ), physical abuse ( $\alpha = 0.73$ ), sexual abuse ( $\alpha = 0.93$ ), emotional neglect ( $\alpha = 0.90$ ), and physical neglect ( $\alpha = 0.61$ ). Main analyses treated CT as a latent variable based on CTQ subscales – a measurement model that fulfilled overall goodness of fit criteria in a confirmatory factor analysis (RMSEA = 0.06, CFI = 0.99, TLI = 0.96, SRMR = 0.01). The standardized factor loadings ranged from 0.32 to 0.83, exceeding the widely-used cutoff of 0.30 (Floyd & Widaman, 1995). Post hoc analyses defined CT categorically, as at least moderate severity in at least one CTQ subscale (see CTQ manual; Bernstein & Fink, 1998).

#### Depressive symptoms

Depressive symptoms were assessed using the self-report version of the 30-item Inventory of Depressive Symptomatology (IDS-SR; Rush *et al.*, 1986; Rush, Carmody, & Reimetz, 2000; Rush, Gullion, Basco, Jarrett, & Trivedi, 1996) at baseline (Cronbach's  $\alpha = 0.82$ ), 9 months ( $\alpha = 0.87$ ), and 18 months ( $\alpha = 0.88$ ). Participants are asked to rate the severity and frequency of specific symptoms present over the last 7 days. Items are rated on a four-point scale (0–3) with variable response options. The total score (sum of all items) is based on 28 items due to branching options (either decreased or increased appetite, but not both; either increased or decreased weight, but not both). The total score ranges from 0 to 84 with higher scores indicating greater depressive symptom severity. Total IDS-SR scores can be interpreted as none (0–13), mild (14–25), moderate (26–38), severe (39–48), and very severe (49–84) depressive symptoms (Rush *et al.*, 2003; Trivedi *et al.*, 2004). The IDS-SR has a good construct validity (Rush *et al.*, 1996). Depressive symptoms were highly stable over the 1.5-year time span (see online Supplementary Fig. S1; Cronbach's  $\alpha$  over time = 0.89), so values were averaged to create a single outcome measure.

#### Perceived stress

Perceived stress over the past month was assessed at baseline with the 10-item PSS ( $\alpha = 0.87$ ; Cohen, 1988; Cohen *et al.*, 1983). It served as a covariate in sensitivity analyses to control for current overall perceived stress at the time of CT recall.

#### Daily diaries

Participants completed daily evening diaries for 7 days at baseline, 9, and 18 months.

### Daily stressors

Participants described 'the event in your life that caused you the most stress today'. Descriptions were objectively coded for stressor severity by two independent research assistants (for details, see Almeida, Wethington, & Kessler, 2002; Catalino, Arenander, Epel, & Puterman, 2017; Crosswell, Coccia, & Epel, 2020). Days with no (objectively coded) stressors (3%) were rare and excluded from analyses. Events of low severity occurred on 51% of days and events of moderate severity on 37%. Events of high (8%) and extreme (<1%) severity were less frequent, so stressor days of at least moderate severity (objectively coded) were combined into one category. A person's average exposure to stress days that were objectively coded as being of at least moderate severity served as a covariate. This ensured that subjective ratings of threat appraisals and negative affect in response to daily events were not a result of the fact that participants differed in the degree to which they actually lived more or less stressful lives (higher/lower average number of days over the past 1.5 years that were objectively considered as 'at least moderately stressful' by two independent raters).

### Threat appraisals

Threat appraisals were measured using items from the Daily Inventory of Stressful Events (DISE; Almeida et al., 2002). First, participants indicated whether the stressful situation had a negative effect on any of the eight appraisal domains: 'Today, did this stressful situation have a negative effect on: (1) your daily routine, (2) your financial situation, (3) the way you feel about yourself, (4) the way others feel about you, (5) your physical health or safety, (6) the health or well-being of someone you care about, (7) your plans for the future, (8) your relationship with someone close to you.' Participants checked all domains that applied (response options: selected or not). Then, for each domain that was selected, a follow-up question assessed the subjective severity of the negative impact on that domain: 'How much did this stressful situation negatively impact [the selected domain]'. Responses were assessed on a four-point scale (1 = 'A little bit'; 4 = 'A lot'). A single threat appraisal variable was calculated by summing all subjective severity ratings across all selected domains and dividing it by the number of selected domains. The measure thus reflects the average threat appraisal severity across selected domains. Subjective severity and appraisal domain items have been shown to correlate with daily physical symptoms and daily negative mood (Almeida et al., 2002).

### Negative affect

Participants reported their current (evening) affect using the modified Differential Emotions Scale (mDES; Fredrickson, Tugade, Waugh, & Larkin, 2003). A single variable was computed by averaging the 12 negative valence items.

### Statistical analysis

To examine mediation, we used a multilevel structural equation modeling (MSEM) framework to take into account nested (daily diary) data while also testing path models (for details, see Heck & Thomas, 2015; Mehta & Neale, 2005; Surachman, Wardecker, Chow, & Almeida, 2019). Analyses were conducted using *Mplus* version 8.1 (Muthén & Muthén, 2012). We used the robust maximum likelihood estimation with robust standard errors to deal with missing data. To test the hypothesized model (see online Supplementary Fig. S2), we first tested a structural equation

model of the association between reported CT and depressive symptoms. The structural equation model was then contrasted to a two-level MSEM finding where we examined whether daily stress processes mediated the association between reported CT and depressive symptoms. The level-1 (within-level) model focused on the prediction of daily negative evening affect by daily threat appraisal. The level-2 (between-level) model focused on the associations between the latent predictor of CT, the latent means of threat appraisals and negative evening affect (latent means provide a more precise estimation of individuals' true means than observed aggregates; Ludtke et al., 2008; Ludtke, Marsh, Robitzsch, & Trautwein, 2011; Marsh et al., 2009), and the observed outcome of depressive symptoms. Finally, indirect effects examined the mediating role of daily stress processes on the association between reported CT and depressive symptoms (Muthén & Muthén, 2012). Sensitivity analyses added the PSS to the MSEM model to at least partly account for the possibility that current overall perceived stress in the past month may introduce biases in retrospective self-reports of CT (Danese & Widom, 2020). Moreover, we compared the hypothesized model to an alternative model, in which depressive symptoms mediated the association between CT and daily stress processes (see online Supplementary Fig. S3). Lastly, we conducted exploratory models within caregivers and controls separately. The estimates reported are based on the standardized results (for unstandardized estimates, please refer to the Supplementary Material).

### Missing data

Missing data are minimal in the data set. Most of the missing data are related to information regarding CTQ, ranging from 7 (CTQ emotional neglect) to 12 (CTQ sexual abuse). Little's MCAR test for CTQ variables indicated that data were missing at random [ $\chi^2$  (df = 35) = 21.88,  $p = 0.96$ ]. Furthermore, our analyses utilized maximum likelihood estimation with robust standard errors that is known to be robust for handling missing data and non-normal distribution.

## Results

### Sample characteristics

Socio-demographic information is presented in Table 1. On average, depressive symptoms were mild, but 21% (38/182) had at least moderate depressive symptoms at least once over the 1.5-year period. About one-third of participants reported at least moderately severe scores in at least one CTQ subscale; these participants reported higher depressive symptoms over the 1.5-year period relative to those with no/low reported CT (IDS  $M = 17$ ,  $s.e. = 8$  *v.*  $M = 14$ ,  $s.e. = 7$ , Cohen's  $d = 0.4$ ), with higher mild [78% (43/55) *v.* 55% (58/105)] and moderate [31% (17/55) *v.* 17% (18/105)] depressive symptoms. Maternal caregivers reported greater daily threat appraisals, daily negative affect, and depressive symptoms across the 1.5-year period compared to maternal controls. Thus, caregiver status was a control variable in models.

### Childhood trauma and depressive symptoms

The structural equation model indicated that greater reported CT predicted higher depressive symptoms over the 1.5-year period (Fig. 1a; estimate = 0.27,  $s.e. = 0.07$ , 95% CI 0.15–0.38,  $p < 0.001$ ), controlling for age, marital status, education, annual household income, and caregiver status. The MSEM findings indicated that

**Table 1.** Descriptive statistics for sociodemographic information, childhood trauma type, daily stress responses, and depressive symptoms

Category	Variable	Entire sample ( <i>n</i> = 183)	Caregivers ( <i>n</i> = 92)	Controls ( <i>n</i> = 91)
		Mean (s.d.) or No. (%)	Mean (s.d.) or No. (%)	Mean (s.d.) or No. (%)
Sociodemographics	Age, mean (s.d.), years	42.43 (5.09)	42.77 (5.63)	42.07 (4.49)
	Race, No. (%) Non-Hispanic White	139 (76)	70 (76)	69 (76)
	Non-Hispanic Black	6 (3)	2 (2)	4 (4)
	Non-Hispanic Asian/Pacific Islander	18 (10)	10 (11)	8 (9)
	Non-Hispanic Native American	1 (0.5)	0 (0)	1 (1)
	Non-Hispanic Other/Multiracial	5 (3)	3 (3)	2 (2)
	Hispanic or Latina	14 (8)	7 (8)	7 (8)
	Marital status, No. (%) married	158 (87)	81 (89)	77 (85)
	Education, No. (%) bachelor's degree or higher	155 (87)	74 (82)	81 (91)
	Annual household income, No. (%) ≥\$ 100 000	139 (76)*	62 (68)	77 (85)
Childhood trauma type	CTQ – Emotional Abuse Subscale, mean (s.d.)	8.36 (3.80)*	9.14 (4.17)	7.63 (3.28)
	CTQ – Physical Abuse Subscale, mean (s.d.)	6.10 (2.16)	6.29 (2.22)	5.92 (2.10)
	CTQ – Sexual Abuse Subscale, mean (s.d.)	5.81 (2.79)	6.09 (3.05)	5.52 (2.49)
	CTQ – Emotional Neglect Subscale, mean (s.d.)	10.47 (4.38)	10.98 (4.65)	9.95 (4.05)
	CTQ – Physical Neglect Subscale, mean (s.d.)	6.27 (1.87)*	6.57 (2.22)	5.98 (1.38)
Daily stress responses	Threat appraisal (mean over 1.5 years)	1.61 (0.57)*	1.81 (0.57)	1.40 (0.50)
	Negative affect (mean over 1.5 years)	0.51 (0.35)*	0.64 (0.39)	0.39 (0.24)
Depressive symptoms	IDS (mean over 1.5 years)	14.94 (7.56)*	18.70 (7.67)	11.19 (5.25)

CTQ, Childhood Trauma Questionnaire; IDS, Inventory of Depressive Symptomatology.

\*Indicates significant group differences ( $p < 0.05$ ).

the majority of the variances for threat appraisal (76%) and negative affect (59%) were within-day, supporting the need to consider the nesting data. Adding daily stress processes into the model improved the goodness of fit criteria (see Table 2). Detailed results from the MSEM analysis are presented in online Supplementary Table S1, including unstandardized and standardized estimates. Findings from level-1 (Fig. 1b; within-level) indicated that on a day in which participants reported greater threat appraisals, they also reported greater negative affect in the evening (estimate = 0.28, s.e. = 0.02, 95% CI 0.25–0.31,  $p < 0.001$ ), controlling for between-person differences in exposure to at least moderately severe stress days (objective severity codes from independent raters).

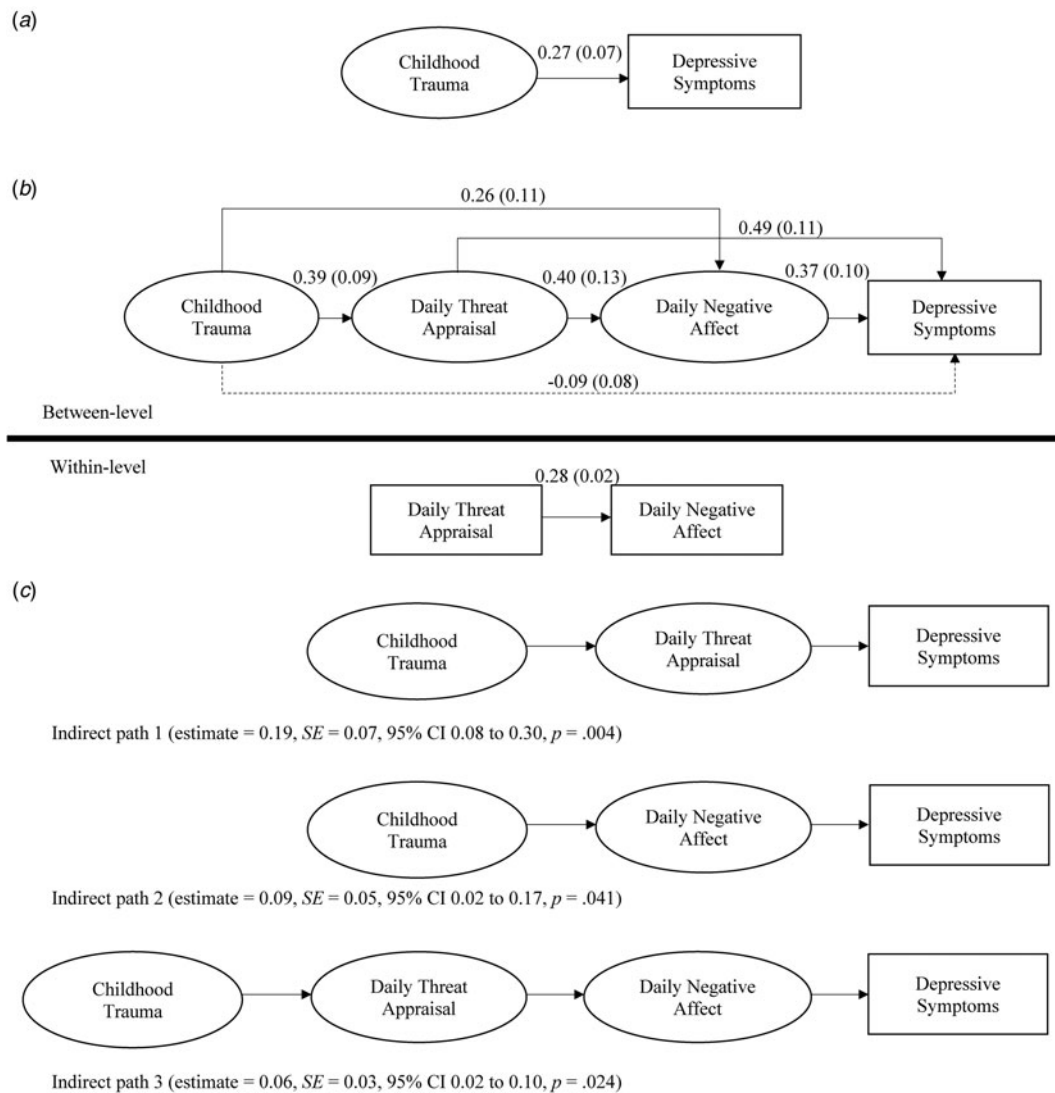
Results from level-2 (Fig. 1b, between-level; adjusting for age, marital status, education, income, caregiver status, and between-person differences in exposure to at least moderately severe stress days) indicated that greater reported CT predicted greater daily threat appraisals (estimate = 0.39, s.e. = 0.09, 95% CI 0.24–0.53,  $p < 0.001$ ) and negative affect (estimate = 0.26, s.e. = 0.11, 95% CI 0.08–0.43,  $p = 0.019$ ). These results indicated that, on average, 1 s.d. increase in CT was associated with 0.39 s.d. and 0.26 s.d. increase in between-person threat appraisal and negative affect, respectively. Furthermore, greater daily threat appraisal predicted greater daily negative affect in the evening (estimate = 0.40, s.e. = 0.13, 95% CI 0.19–0.60,  $p = 0.002$ ). Finally, both greater daily threat appraisals (estimate = 0.49, s.e. = 0.11, 95% CI 0.32–0.67,  $p < 0.001$ ) and negative affect (estimate = 0.37, s.e. = 0.10, 95% CI 0.20–0.53,  $p < 0.001$ ) predicted greater depressive symptoms. The direct path between reported CT and depressive symptoms was no longer significant (estimate = –0.09, s.e. = 0.08, 95% CI –0.22

to 0.04,  $p = 0.26$ ), indicating mediation by daily stress processes. Mediation was supported by the total indirect effect from reported CT to depressive symptoms through daily stress processes (estimate = 0.34, s.e. = 0.08, 95% CI 0.22–0.46,  $p < 0.001$ ). Daily threat appraisals accounted for more than 50% of the total indirect effect from reported CT to depressive symptoms (Fig. 1c, indirect path 1; estimate = 0.19, s.e. = 0.07, 95% CI 0.08–0.30,  $p = 0.004$ ). Post hoc analyses showed that lower daily threat appraisals buffered depressive symptoms in those who reported at least moderate CT severity (Fig. 2, panel a). A similar pattern was present in those who reported no/low CT severity (Fig. 2, panel b).

### Sensitivity analyses

Given that day-level data were nested within the study waves (baseline, 9-month, and 18-month follow-up), we also considered a three-level MSEM (level-1: between-day, level-2: between-wave, and level-3: between-person). However, there was a lack of between-wave variances for threat appraisal (7%), negative affect (7%), and depressive symptoms (29%), so we only presented findings from the level-2 model (though between-person findings from the level-3 MSEM were consistent with findings from the level-2 MSEM). Furthermore, we also considered an alternative level-2 model with depressive symptoms as the mediator and daily stress processes as the outcome. The model fit indices for this alternative model are significantly worse than the hypothesized model (Table 2).

In addition, we tested whether significant MSEM results remained after controlling for current overall perceived stress in



**Fig. 1.** Findings from the prediction of depressive symptoms by reported childhood trauma. Greater reported childhood trauma predicted higher depressive symptom, adjusting for age, marital status, education, annual household income, and caregiver group status (*a*; structural equation model). However, after adding daily stress processes into the model (*b*; multilevel structural equation modeling, MSEM), the direct association between reported childhood trauma and depressive symptoms was no longer significant, indicating mediation by daily threat appraisals and daily negative affect. The indirect analysis indicated that there was a total indirect effect from reported childhood trauma to depressive symptoms through daily stress processes (estimate = 0.34, *s.e.* = 0.08, 95% CI 0.22–0.46, *p* < 0.001), in which more than 50% of the indirect effect was explained through daily threat appraisals (*c*; indirect path 1). *Note:* All reported estimates are standardized (for unstandardized estimates, see online Supplementary Table S1); squares = observed variables; circles = latent variables. MSEM analyses adjusted for age, marital status, education, income, caregiver group status, and between-person differences in exposure to at least moderately severe stress days.

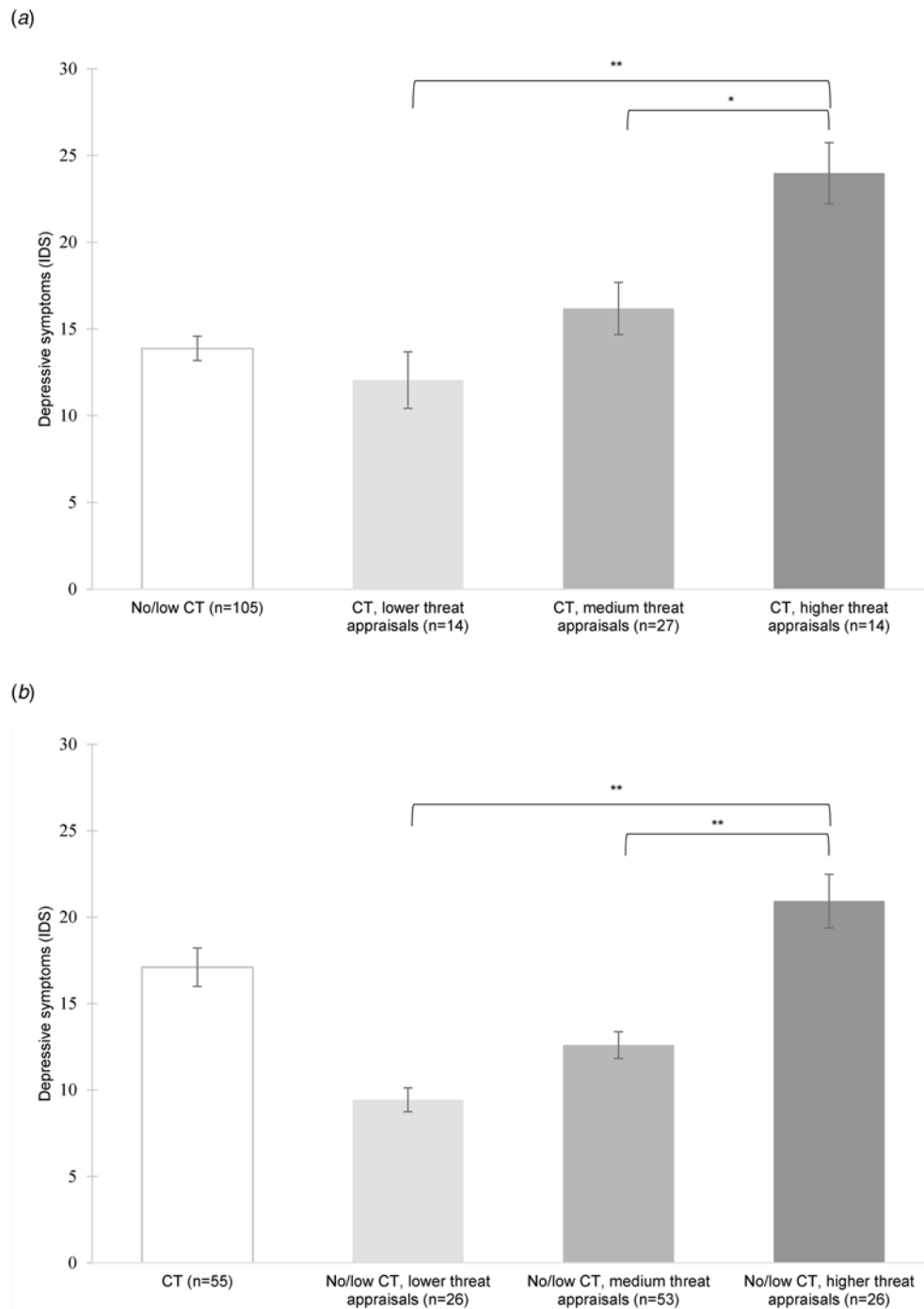
**Table 2.** Model fit indices

Model	$\chi^2$	df	$\chi^2/df$	RMSEA	CFI	TLI	SRMR-W	SRMR-B	AIC	BIC	a-BIC
Childhood trauma, daily stress processes, and depressive symptoms											
S.E.M.	76.93	42	1.83	0.08	0.90	0.86	0.07 <sup>a</sup>		9382.8	9530.0	9384.3
Hypothesized MSEM	126.64	66	1.92	0.02	0.94	0.92	0.00	0.08	24 826.8	25 200.7	25 003.7
Alternative MSEM <sup>b</sup>	199.54	66	3.02	0.03	0.89	0.84	0.00	0.12	24 899.8	25 255.6	25 068.1

S.E.M., structural equation model; MSEM, multilevel structural equation model;  $\chi^2$ , chi-square test of model fit; df, degrees of freedom for the  $\chi^2$  test of model fit; RMSEA, root mean square error of approximation; CFI, comparative fit index; TLI, Tucker–Lewis index; SRMR-B, standardized root mean square residual for between level; SRMR-W, standardized root mean square residual for within level; AIC, Akaike’s information criterion; BIC, Bayesian information criterion; a-BIC, sample-size adjusted Bayesian information criterion.

<sup>a</sup>The structural equation model only has one value of standardized root mean square residual.

<sup>b</sup>Alternative MSEM with depressive symptoms as mediator.



**Fig. 2.** Associations between daily threat appraisals and depressive symptoms. (a) Depressive symptoms (Inventory of Depressive Symptomatology, IDS) among participants who reported at least moderate levels of childhood trauma (CT; defined as at least moderate severity in at least one subscale of the Childhood Trauma Questionnaire) based on their lower ( $\leq 25$ th percentile), medium (between  $>25$ th and  $<75$ th percentile), or higher ( $\geq 75$ th percentile) daily threat appraisals. Daily threat appraisals predicted depressive symptoms in individuals who reported CT ( $F_{2,52} = 10.33, p < 0.001$ ). Bonferroni corrected tests showed that individuals with higher threat appraisals had higher depressive symptoms compared to individuals with medium and lower threat appraisals. Mean depressive symptoms for the no/low CT group was included as a reference. Note: \*\* $p < 0.001$ ; \* $p < 0.01$ . (b) Depressive symptoms (Inventory of Depressive Symptomatology, IDS) among participants who reported no or low levels of childhood trauma (no/low CT) based on their lower ( $\leq 25$ th percentile), medium (between  $>25$ th and  $<75$ th percentile), or higher ( $\geq 75$ th percentile) daily threat appraisals. Daily threat appraisals predicted depressive symptoms in individuals who reported no/low CT ( $F_{2,102} = 27.73, p < 0.001$ ). Bonferroni corrected tests showed that individuals with higher threat appraisals had higher depressive symptoms compared to individuals with medium and lower threat appraisals. Mean depressive symptoms for the CT group was included as a reference. Note: \*\* $p < 0.001$ .

the past month (PSS) at the time of CT recall. Reported CT remained significantly associated with daily threat appraisals (estimate = 0.42, s.e. = 0.10, 95% CI 0.26–0.58,  $p < 0.001$ ) and daily

negative affect (estimate = 0.27, s.e. = 0.11, 95% CI 0.09–0.45,  $p = 0.016$ ). Furthermore, daily threat appraisals remained significantly associated with daily negative affect (estimate = 0.39,

s.e. = 0.13, 95% CI 0.18–0.60,  $p = 0.002$ ), and both daily threat appraisals (estimate = 0.28, s.e. = 0.10, 95% CI 0.12–0.44,  $p = 0.005$ ) and daily negative affect (estimate = 0.30, s.e. = 0.11, 95% CI 0.12–0.48,  $p = 0.007$ ) remained significantly associated with depressive symptoms. Adding PSS into the model attenuated the indirect effect from reported CT to depressive symptoms through daily stress processes, though a significant indirect effect prevailed (estimate = 0.25, s.e. = 0.07, 95% CI 0.14–0.35,  $p < 0.001$ ). Similarly, specific indirect pathways through daily threat appraisals (estimate = 0.12, s.e. = 0.05, 95% CI 0.03–0.20,  $p = 0.023$ ), daily negative affect (estimate = 0.08, s.e. = 0.04, 95% CI 0.01–0.15,  $p = 0.042$ ), and both daily threat appraisals and daily negative affect (estimate = 0.05, s.e. = 0.03, 95% CI 0.01–0.09,  $p = 0.044$ ) were slightly attenuated but remained significant. The indirect effect through daily threat appraisals still accounted for around 50% of the indirect effect from reported CT to depressive symptoms even after controlling for current perceived stress in the past month.

Lastly, we conducted exploratory models within caregivers and controls separately. Overall, findings showed a pattern that was highly consistent with the main findings, though some associations became non-significant, as expected given the much smaller sample size in each group (for details, please see online Supplementary Analysis S1 and S2; Figures S4 and S5; Tables S2 and S3).

## Discussion

The study examined daily cognitive-affective stress processes as a risk pathway linking CT to depressive symptoms in midlife. Results showed that reported CT predicted elevated depressive symptoms. Daily threat appraisals and negative affect in the evening mediated the effect of reported CT on depressive symptoms. Particularly daily threat appraisals, which explained 50% of the total indirect effect from CT to depressive symptoms, may play a key role in molding depression risk.

Our data suggest that reported CT can leave ‘scars’ on adult mental health even in a healthy sub-clinical population. This replicates prior evidence of increased risk for depression (Danese & Baldwin, 2017; Green et al., 2010; Kendler et al., 2000; Kessler et al., 2010; Repetti, Taylor, & Seeman, 2002). It is notable that almost 80% of individuals with reported CT also reported at least mild depressive symptoms. The mental health risks may be conferred by the pervasive biopsychosocial effects (Danese & Lewis, 2017; Miller et al., 2011; Nelson, 2017; Shalev, 2012; Shonkoff & Garner, 2012) that trauma may have during periods in which the brain and physiological systems develop.

This study sheds light on the role of daily psychological stress processes as a persistent risk pathway. Reported CT predicted greater threat appraisals and negative affect in response to daily minor events, consistent with prior studies (Glaser et al., 2006; Infurna et al., 2015; Kong et al., 2019; Lardinois et al., 2011; Mallers et al., 2010; Wertz et al., 2016). This suggests that reported CT can have long-lasting effects on individuals’ mental filter – how they interpret and affectively respond to everyday hassles. In turn, maladaptive daily stress responses predicted elevated depressive symptoms, replicating prior studies on increased affective reactivity and mental health (Charles et al., 2013; Cohen et al., 2005) and demonstrating in an ecological context that daily threat appraisals are associated with elevated depressive symptoms.

That CT predicts poorer mental health in general is not new. But determining how, on a daily basis, this is working, is novel.

We were able to directly test mediation in our study of daily stress processes. Results showed that greater reported CT predicted elevated depressive symptoms through greater daily threat appraisals and greater daily negative affect. Notably, more than half of this indirect effect on depressive symptoms was explained by how individuals appraised everyday stressors as having a greater negative impact on their lives. Post hoc analyses showed that greater threat appraisals were associated with elevated depressive symptoms in participants who reported at least moderate CT severity; conversely, lower threat appraisals were linked with lower depressive symptoms – to the extent that scores were asymptomatic and comparable to participants who reported no/low CT severity. A similar gradient relationship between threat appraisals and depressive symptoms was also found in participants with no/low reported CT severity. These data suggest that daily threat appraisals constitute a risk and resilience factor for those with and without a reported history of CT and may provide a promising target for depression interventions.

## Limitations

We did not recruit a sample with known depression, so conclusions are limited to a sub-clinical sample of participants at risk for depression. Furthermore, the study sample was highly selective with eligibility criteria and sociodemographic characteristics that are not representative of the general US population or the majority of women with a history of CT. Thus, results are likely only relevant for white women of higher SES (the majority of the sample has a bachelor’s degree and an annual household income  $\geq$  \$100 000) with no major diseases or serious psychiatric disorders – factors that confer resilience (Almeida, 2005; Chui, Hay, & Diehl, 2012). For this reason, findings may only apply to women who tend to be white and of higher socioeconomic status with a reported history of CT. It will be important to test these relationships in samples that are lower income and more racially and ethnically diverse. Other stress-buffering and protective factors, such as current or past mental health treatment (e.g. CBT, supportive therapy or resources to cope with daily challenges) also warrant investigation in future studies. Conclusions are further limited to the specific characteristics of the sample that included mothers across the chronic stress spectrum (both mothers of children with an autism spectrum disorder as well as mothers of neurotypical children). The effects of chronic caregiver stress on daily stress perceptions and mood states are described elsewhere (Crosswell et al., 2020), and our results shed some light on the specific effects of reported CT. Caregivers and controls had different selection criteria (e.g. differences in PSS criteria; current major depression and antidepressant use permitted among caregivers) and also differed in two of the five types of CT (caregivers had higher scores on emotional abuse and physical neglect compared to controls), raising the possibility that findings are confounded by caregiver group status. However, all main models controlled for caregiver group status and exploratory models within caregivers and controls separately yielded an overall pattern of effects that was highly consistent with the main findings. Experiencing both childhood and adult (caregiver) stress might be associated with increased depression risk. However, interaction effects were not examined due to lack of power. Nevertheless, the effects of reported CT were present above and beyond chronic caregiver stress in adulthood, highlighting the role of the early environment in shaping daily stress responses and mental health in midlife.

Another limitation is that CT was assessed via retrospective self-report with the CTQ, which could be affected by reporting/recall biases linked, for example, to current perceived stress at the time of recall (Baldwin, Reuben, Newbury, & Danese, 2019; Danese, 2020; Dube, Williamson, Thompson, Felitti, & Anda, 2004; Maughan & Rutter, 1997). Thus, there is the possibility that the CTQ may measure negative biases in autobiographical memory or current affect and stress states rather than actual adversity exposure, which, in turn, may predict depressive symptoms via persistence of negative cognitive-affective biases in daily stress processes (Danese, 2020). Thus, it is conceivable that the findings, which were based on self-report data, do not reflect the ‘long shadow of CT’ but rather correlates of unhelpful cognition-affective states about the self and the environment that are related to the ‘subjective experience’ of CT (Danese & Widom, 2020). Whether the CTQ captures the long-term consequences or the subjective experience of CT, a greater understanding of the underlying mechanisms is important to explain its association with psychopathology and inform treatment development (Nanni, Uher, & Danese, 2012). To at least partly account for such potential cognitive-affective biases as in previous research (Danese & Widom, 2020), we conducted sensitivity analyses that adjusted for overall perceived stress at baseline – a proxy measure for capturing negative cognitive-affective states at the time of CT recall. Notably, findings were not altered adjusting for overall perceived stress, strengthening our interpretation of findings. Another limitation was that daily diaries only retrospectively assessed threat appraisals in the evening, not concurrently. Though shorter time windows minimize retrospective biases (Ebner-Priemer & Trull, 2009), future studies will benefit from real-time ecological assessments. Lastly, due to the lack of variability between study assessments, we could not capture how individual changes in daily stress processes related to temporal changes in depressive symptoms. Our results thus examine between-person associations, showing stable, trait-like relationships between CT, daily stress response habits, and depressive symptoms.

### Implications

How people respond each day matters. Developing more adaptive daily stress responses, particularly lowering threat appraisals in safe environmental contexts, may foster resilience. Since threat appraisals are often made quickly and on ‘autopilot’, awareness is a prerequisite. Appraisals that emphasize physical and emotional safety may be particularly salient for individuals with CT (Gilbert, McEwan, Matos, & Ravis, 2011). Mindfulness-based practices facilitate both present moment awareness and re-appraisals of stressors as being benign (Garland, Geschwind, Peeters, & Wichers, 2015; Garland, Kiken, Faurot, Palsson, & Gaylord, 2017), providing a promising intervention approach. Appraisals are also shaped by past experiences that are encoded into autobiographical memories and carried forward as narratives that shape reality (McCroory et al., 2017). Traumatic experiences fuel threat narratives. Processing traumatic memories and creating new narratives are key components of trauma-focused interventions (Cohen, Mannarino, Kliethermes, & Murray, 2012; Ehlers, 2013), which might have positive downstream effects for stress appraisals.

### Summary

A reported history of CT casts a long shadow into later adult life by shaping the lens through which everyday events are interpreted and experienced, creating an underlying stress vulnerability that

has important mental health consequences even in sub-clinical populations. Daily psychological stress processes, especially threat appraisals, serve as promising, malleable intervention targets for individuals with reported CT.

**Supplementary material.** The supplementary material for this article can be found at <https://doi.org/10.1017/S0033291721000921>

**Financial support.** Research reported in this publication was supported by the National Institute On Aging (NIA) of the National Institutes of Health (NIH) under Award Number K99AG062778 awarded to Stefanie Mayer. Furthermore, Agus Surachman is supported by the Jean Britton Graduate Fellowship and the NIA grant T32AG049676 awarded to The Pennsylvania State University. The content is solely the responsibility of the authors and does not necessarily represent the official views of the National Institutes of Health.

**Conflict of interest.** None.

### References

- Almeida, D. M. (2005). Resilience and vulnerability to daily stressors assessed via diary methods. *Current Directions in Psychological Science*, 14(2), 64–68. doi: 10.1111/j.0963-7214.2005.00336.x
- Almeida, D. M., Wethington, E., & Kessler, R. C. (2002). The daily inventory of stressful events: An interview-based approach for measuring daily stressors. *Assessment*, 9(1), 41–55. doi: 10.1177/1073191102091006
- Baldwin, J. R., Reuben, A., Newbury, J. B., & Danese, A. (2019). Agreement between prospective and retrospective measures of childhood maltreatment: A systematic review and meta-analysis. *JAMA Psychiatry*, 76(6), 584–593. doi: 10.1001/jamapsychiatry.2019.0097
- Bernstein, D. P., & Fink, L. (1998). *Childhood trauma questionnaire: A retrospective self-report. Manual*. San Antonio, TX: Psychological Corporation.
- Blascovich, J., & Mendes, W. B. (2010). Social psychophysiology and embodiment. In S. T. Fiske, & D. T. Gilbert (Eds.), *The handbook of social psychology* (pp. 194–227). New York: Wiley.
- Catalino, L. I., Arenander, J., Epel, E., & Puterman, E. (2017). Trait acceptance predicts fewer daily negative emotions through less stressor-related rumination. *Emotion (Washington, D.C.)*, 17(8), 1181–1186. doi: 10.1037/emo0000279
- Charles, S. T., Piazza, J. R., Mogle, J., Sliwinski, M. J., & Almeida, D. M. (2013). The wear and tear of daily stressors on mental health. *Psychological Science*, 24(5), 733–741. doi: 10.1177/0956797612462222
- Chui, H., Hay, E. L., & Diehl, M. (2012). Personal risk and resilience factors in the context of daily stress. *Annual Review of Gerontology and Geriatrics*, 32(1), 251–274.
- Cohen, S. (1988) Perceived stress in a probability sample of the United States. In S. Spacapan, & S. Oskamp (Eds.), *The Claremont symposium on applied social psychology. The social psychology of health* (pp. 31–67). Newbury Park: Sage Publications, Inc.
- Cohen, L. H., Gunthert, K. C., Butler, A. C., O’Neill, S. C., & Tolpin, L. H. (2005). Daily affective reactivity as a prospective predictor of depressive symptoms. *Journal of Personality*, 73(6), 1687–1714. doi: 10.1111/j.0022-3506.2005.00363.x
- Cohen, S., Kamarck, T., & Mermelstein, R. (1983). A global measure of perceived stress. *Journal of Health and Social Behavior*, 24(4), 385–396.
- Cohen, J. A., Mannarino, A. P., Kliethermes, M., & Murray, L. A. (2012). Trauma-focused CBT for youth with complex trauma. *Child Abuse & Neglect*, 36(6), 528–541. doi: 10.1016/j.chiabu.2012.03.007
- Crosswell, A. D., Coccia, M., & Epel, S. S. (2020). Mind wandering and stress: When you don’t like the present moment. *Emotion (Washington, D.C.)*, 20(3), 403.
- Danese, A. (2020). Annual research review: Rethinking childhood trauma-new research directions for measurement, study design and analytical strategies. *Journal of Child Psychology and Psychiatry*, 61(3), 236–250.
- Danese, A., & Baldwin, J. R. (2017). Hidden wounds? Inflammatory links between childhood trauma and psychopathology. *Annual Review of Psychology*, 68, 517–544. doi: 10.1146/annurev-psych-010416-044208



- Danese, A., & Lewis, S. J. (2017). Psychoneuroimmunology of early-life stress: The hidden wounds of childhood trauma? *Neuropsychopharmacology*, 42(1), 99–114. doi: 10.1038/npp.2016.198
- Danese, A., & Widom, C. S. (2020). Objective and subjective experiences of child maltreatment and their relationships with psychopathology. *Nature Human Behaviour*, 4(8), 811–818. doi: 10.1038/s41562-020-0880-3.
- Dube, S. R., Williamson, D. F., Thompson, T., Felitti, V. J., & Anda, R. F. (2004). Assessing the reliability of retrospective reports of adverse childhood experiences among adult HMO members attending a primary care clinic. *Child Abuse & Neglect*, 28(7), 729–737. doi: 10.1016/j.chiabu.2003.08.009
- Ebner-Priemer, U. W., & Trull, T. J. (2009). Ecological momentary assessment of mood disorders and mood dysregulation. *Psychological Assessment*, 21(4), 463–475. doi: 10.1037/a0017075
- Ehlers, A. (2013). Trauma-focused cognitive behavior therapy for post-traumatic stress disorder and acute stress disorder. In G. Simos & S. G. Hofmann (Eds.), *CBT for anxiety disorders: A practitioner book* (pp. 161–190). New York, NY: Wiley.
- Epel, E. S., Crosswell, A. D., Mayer, S. E., Prather, A. A., Slavich, G. M., Puterman, E., & Mendes, W. B. (2018). More than a feeling: A unified view of stress measurement for population science. *Frontiers in Neuroendocrinology*, 49, 146–169. doi: 10.1016/j.yfrne.2018.03.001
- Floyd, F. J., & Widaman, K. F. (1995). Factor analysis in the development and refinement of clinical assessment instruments. *Psychological Assessment*, 7(3), 286.
- Fredrickson, B. L., Tugade, M. M., Waugh, C. E., & Larkin, G. R. (2003). What good are positive emotions in crises? A prospective study of resilience and emotions following the terrorist attacks on the United States on September 11th, 2001. *Journal of Personality and Social Psychology*, 84(2), 365–376. doi: 10.1037//0022-3514.84.2.365
- Garland, E. L., Geschwind, N., Peeters, F., & Wichers, M. (2015). Mindfulness training promotes upward spirals of positive affect and cognition: Multilevel and autoregressive latent trajectory modeling analyses. *Frontiers in Psychology*, 6(15), 1–13. doi: 10.3389/fpsyg.2015.00015.
- Garland, E. L., Kiken, L. G., Faurot, K., Palsson, O., & Gaylord, S. A. (2017). Upward spirals of mindfulness and reappraisal: Testing the mindfulness-to-meaning theory with autoregressive latent trajectory modeling. *Cognitive Therapy Research*, 41, 381–392.
- Gilbert, P., McEwan, K., Matos, M., & Rivis, A. (2011). Fears of compassion: Development of three self-report measures. *Psychology and Psychotherapy*, 84(3), 239–255. doi: 10.1348/147608310X526511
- Glaser, J. P., van Os, J., Portegijs, P. J., & Myin-Germeys, I. (2006). Childhood trauma and emotional reactivity to daily life stress in adult frequent attenders of general practitioners. *Journal of Psychosomatic Research*, 61(2), 229–236. doi: 10.1016/j.jpsychores.2006.04.014
- Green, J. G., McLaughlin, K. A., Berglund, P. A., Gruber, M. J., Sampson, N. A., Zaslavsky, A. M., & Kessler, R. C. (2010). Childhood adversities and adult psychiatric disorders in the national comorbidity survey replication I: Associations with first onset of DSM-IV disorders. *Archives of General Psychiatry*, 67(2), 113–123. doi: 10.1001/archgenpsychiatry.2009.186
- Heck, R. H., & Thomas, S. L. (2015). *An introduction to multilevel modeling techniques: MLM and SEM approaches using Mplus* (3rd edition, pp. 1–440). Routledge.
- Infurna, F. J., Rivers, C. T., Reich, J., & Zautra, A. J. (2015). Childhood trauma and personal mastery: Their influence on emotional reactivity to everyday events in a community sample of middle-aged adults. *PLoS ONE*, 10(4), e0121840. doi: 10.1371/journal.pone.0121840
- Kendler, K. S., Bulik, C. M., Silberg, J., Hettema, J. M., Myers, J., & Prescott, C. A. (2000). Childhood sexual abuse and adult psychiatric and substance use disorders in women: An epidemiological and cotwin control analysis. *Archives of General Psychiatry*, 57(10), 953–959. doi: 10.1001/archpsyc.57.10.953
- Kessler, R. C., Davis, C. G., & Kendler, K. S. (1997). Childhood adversity and adult psychiatric disorder in the US National Comorbidity Survey. *Psychological Medicine*, 27(5), 1101–1119. doi: 10.1017/s0033291797005588
- Kessler, R. C., McLaughlin, K. A., Green, J. G., Gruber, M. J., Sampson, N. A., Zaslavsky, A. M., ... Williams, D. R. (2010). Childhood adversities and adult psychopathology in the WHO world mental health surveys. *British Journal of Psychiatry*, 197(5), 378–385. doi: 10.1192/bjp.bp.110.080499
- Kong, J., Martire, L. M., Liu, Y., & Almeida, D. M. (2019). Effects of parental childhood abuse on daily stress processes in adulthood. *Journal of Interpersonal Violence*, 1–20. doi: 10.1177/0886260519869068.
- Lardinois, M., Lataster, T., Mengelers, R., Van Os, J., & Myin-Germeys, I. (2011). Childhood trauma and increased stress sensitivity in psychosis. *Acta Psychiatrica Scandinavica*, 123(1), 28–35. doi: 10.1111/j.1600-0447.2010.01594.x
- Lazarus, R. S. (1999). *Stress and emotion: A new synthesis*. New York: Springer.
- Ludtke, O., Marsh, H. W., Robitzsch, A., Trautwein, U., Asparouhov, T., & Muthen, B. (2008). The multilevel latent covariate model: A new, more reliable approach to group-level effects in contextual studies. *Psychological Methods*, 13(3), 203–229. doi: 10.1037/a0012869
- Ludtke, O., Marsh, H. W., Robitzsch, A., & Trautwein, U. (2011). A 2 × 2 taxonomy of multilevel latent contextual models: accuracy-bias trade-offs in full and partial error correction models. *Psychological Methods*, 16(4), 444–467. doi: 10.1037/a0024376
- Mallers, M. H., Charles, S. T., Neupert, S. D., & Almeida, D. M. (2010). Perceptions of childhood relationships with mother and father: Daily emotional and stressor experiences in adulthood. *Developmental Psychology*, 46(6), 1651–1661. doi: 10.1037/a0021020
- Marsh, H. W., Ludtke, O., Robitzsch, A., Trautwein, U., Asparouhov, T., Muthen, B., & Nagengast, B. (2009). Doubly-latent models of school contextual effects: Integrating multilevel and structural equation approaches to control measurement and sampling error. *Multivariate Behavioral Research*, 44(6), 764–802. doi: 10.1080/00273170903333665
- Maughan, B., & Rutter, M. (1997). Retrospective reporting of childhood adversity: Issues in assessing long-term recall. *Journal of Personality Disorders*, 11(1), 19–33. doi: 10.1521/pedi.1997.11.1.19
- McCrary, E. J., Puetz, V. B., Maguire, E. A., Mechelli, A., Palmer, A., Gerin, M. I., ... Viding, E. (2017). Autobiographical memory: A candidate latent vulnerability mechanism for psychiatric disorder following childhood maltreatment. *The British Journal of Psychiatry*, 211(4), 216–222. doi: 10.1192/bjp.bp.117.201798
- Mehta, P. D., & Neale, M. C. (2005). People are variables too: Multilevel structural equations modeling. *Psychological Methods*, 10(3), 259–284. doi: 10.1037/1082-989x.10.3.259
- Miller, G. E., Chen, E., & Parker, K. J. (2011). Psychological stress in childhood and susceptibility to the chronic diseases of aging: Moving toward a model of behavioral and biological mechanisms. *Psychological Bulletin*, 137(6), 959–997. doi: 10.1037/a0024768
- Muthén, L. K., & Muthén, B. O. (2012). *MPlus: statistical analysis with latent variables – User's guide*.
- Nanni, V., Uher, R., & Danese, A. (2012). Childhood maltreatment predicts unfavorable course of illness and treatment outcome in depression: A meta-analysis. *American Journal of Psychiatry*, 169(2), 141–151.
- Nelson, III, C. A. (2017). Hazards to early development: The biological embedding of early life adversity. *Neuron*, 96(2), 262–266. doi: 10.1016/j.neuron.2017.09.027
- O'Donovan, A., Tomiyama, A. J., Lin, J., Puterman, E., Adler, N. E., Kemeny, M., ... Epel, E. S. (2012). Stress appraisals and cellular aging: A key role for anticipatory threat in the relationship between psychological stress and telomere length. *Brain, Behavior, and Immunity*, 26(4), 573–579. doi: 10.1016/j.bbi.2012.01.007
- Piazza, J. R., Charles, S. T., Sliwinski, M. J., Mogle, J., & Almeida, D. M. (2013). Affective reactivity to daily stressors and long-term risk of reporting a chronic physical health condition. *Annals of Behavioral Medicine*, 45(1), 110–120. doi: 10.1007/s12160-012-9423-0
- Repetti, R. L., Taylor, S. E., & Seeman, T. E. (2002). Risky families: Family social environments and the mental and physical health of offspring. *Psychological Bulletin*, 128(2), 330–366.
- Rush, A. J., Carmody, T., & Reimitt, P. E. (2000). The Inventory of Depressive Symptomatology (IDS): Clinician (IDS-C) and self-report (IDS-SR) ratings of depressive symptoms. *International Journal of Methods in Psychiatric Research*, 9(2), 45–59.
- Rush, A. J., Giles, D. E., Schlessner, M. A., Fulton, C. L., Weissenburger, J., & Burns, C. (1986). The inventory for depressive symptomatology (IDS): Preliminary findings. *Psychiatry Research*, 18(1), 65–87.

- Rush, A. J., Gullion, C. M., Basco, M. R., Jarrett, R. B., & Trivedi, M. H. (1996). The inventory of depressive symptomatology (IDS): Psychometric properties. *Psychological Medicine*, 26(3), 477–486.
- Rush, A. J., Trivedi, M. H., Ibrahim, H. M., Carmody, T. J., Arnow, B., Klein, D. N., ... Manber, R. (2003). The 16-Item Quick Inventory of Depressive Symptomatology (QIDS), clinician rating (QIDS-C), and self-report (QIDS-SR): A psychometric evaluation in patients with chronic major depression. *Biological Psychiatry*, 54(5), 573–583.
- Shalev, I. (2012). Early life stress and telomere length: Investigating the connection and possible mechanisms: A critical survey of the evidence base, research methodology and basic biology. *Bioessays*, 34(11), 943–952. doi: 10.1002/bies.201200084
- Shonkoff, J. P., & Garner, A. S. (2012). The lifelong effects of early childhood adversity and toxic stress. *Pediatrics*, 129(1), e232–e246. doi: 10.1542/peds.2011-2663
- Sin, N. L., Graham-Engeland, J. E., Ong, A. D., & Almeida, D. M. (2015). Affective reactivity to daily stressors is associated with elevated inflammation. *Health Psychology*, 34(12), 1154–1165. doi: 10.1037/hea0000240
- Slavich, G. M., & Irwin, M. R. (2014). From stress to inflammation and major depressive disorder: A social signal transduction theory of depression. *Psychological Bulletin*, 140(3), 774. doi: 10.1037/a0035302
- Surachman, A., Wardecker, B., Chow, S.-M., & Almeida, D. (2019). Life course socioeconomic status, daily stressors, and daily well-being: Examining chain of risk models. *The Journals of Gerontology: Series B*, 74(1), 126–135. doi: 10.1093/geronb/gby014
- Trivedi, M. H., Rush, A., Ibrahim, H., Carmody, T., Biggs, M., Suppes, T., ... Dennehy, E. (2004). The Inventory of Depressive Symptomatology, Clinician Rating (IDS-C) and Self-Report (IDS-SR), and the Quick Inventory of Depressive Symptomatology, Clinician Rating (QIDS-C) and Self-Report (QIDS-SR) in public sector patients with mood disorders: A psychometric evaluation; psychometrics of the QIDS in public sector patients; MH Trivedi and others. *Psychological Medicine*, 34(1), 73.
- Weltz, S. M., Armeli, S., Ford, J. D., & Tennen, H. (2016). A daily process examination of the relationship between childhood trauma and stress-reactivity. *Child Abuse & Neglect*, 60, 1–9. doi: 10.1016/j.chiabu.2016.08.005